

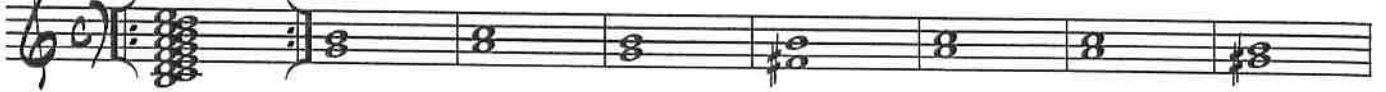
ACCORDION

HELA HELA HELA

BART MARIS

ON CUE 2-4 GROEPEN
WISSEL AF/OVERLAP

F G7 B MIN F F E



E E E E E EMIN GROOVE



INTRO EMIN EMIN EMIN EMIN F F EMIN F F EMIN



A

ZANG



A



ZWAAR GEFREAK (ENKEL 1STE K)



2 **A** MIN **G**7 HELA HELA HELA **E** MIN7

51

A MIN **A** MIN **G**7 **G**7 **F** **F** **E** MIN7 **F** **E** MIN

59

E MIN7

67

E

75

F MIN **B** MIN7 **F** **D** MIN/F **E** MIN **E** MIN

83

F **F** **G** **G** **F** **F** **E** MIN **E** MIN **G** HERHAAL TOT CUE

91

D'INTERRUPTIE

102

A MIN **A** MIN **G**7/D **G**7/D **D** MIN **D** MIN **F** **F**

110

E7 **F** **E**7 **E**7

118