

Contrabass

# ESQUILINO

♩=130 PIZZ

**A**

Musical staff for section A, starting at measure 1. It features a bass clef, a key signature of one flat (B-flat), and a 4/4 time signature. The music consists of eighth notes and quarter notes, with some notes beamed together. There are rests in measures 2, 3, and 4.

8

**B**

4

Musical staff for section B, starting at measure 8. It features a bass clef, a key signature of one flat, and a 4/4 time signature. The music consists of eighth notes and quarter notes. There is a double bar line followed by a 4-measure rest.

15 **C**

Musical staff for section C, starting at measure 15. It features a bass clef, a key signature of one flat, and a 4/4 time signature. The music consists of eighth notes and quarter notes, with some notes beamed together. There are accents and slurs over some notes.

21

Musical staff for section C continuation, starting at measure 21. It features a bass clef, a key signature of one flat, and a 4/4 time signature. The music consists of eighth notes and quarter notes, with some notes beamed together. There are accents and slurs over some notes.

27 ♩=125

Musical staff for section D, starting at measure 27. It features a bass clef, a key signature of one flat, and a 4/4 time signature. The music consists of eighth notes and quarter notes, with some notes beamed together. There is a double bar line at the beginning of the staff.

31 **D**

Musical staff for section D continuation, starting at measure 31. It features a bass clef, a key signature of one flat, and a 4/4 time signature. The music consists of eighth notes and quarter notes, with some notes beamed together.

35

Musical staff for section D continuation, starting at measure 35. It features a bass clef, a key signature of one flat, and a 4/4 time signature. The music consists of eighth notes and quarter notes, with some notes beamed together. There is a double bar line at the end of the staff.

40



43 **E**



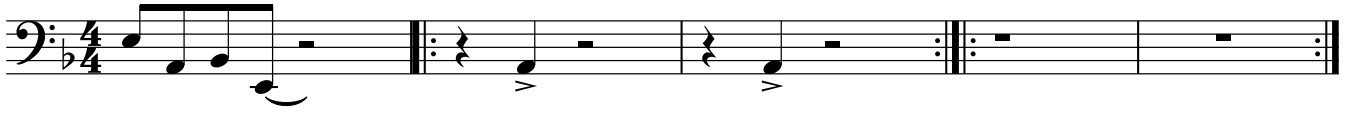
49



54



59 **F**



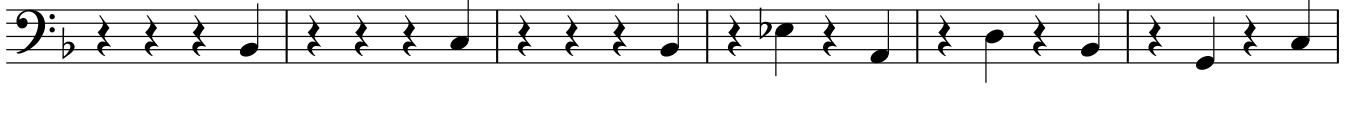
64 **G**



68



72 **H**



78



84



87

