

Bauba

des d'œuf

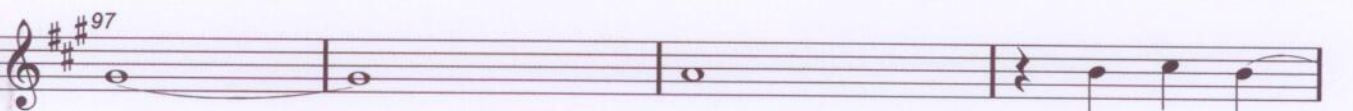
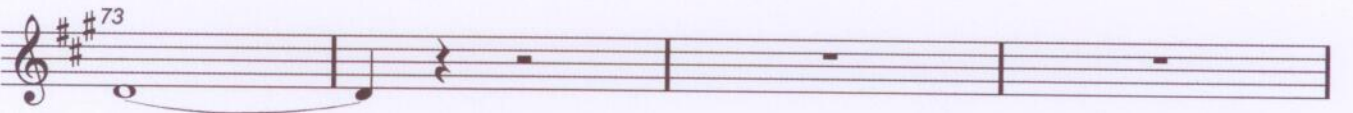
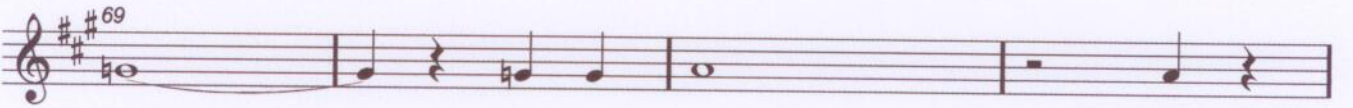
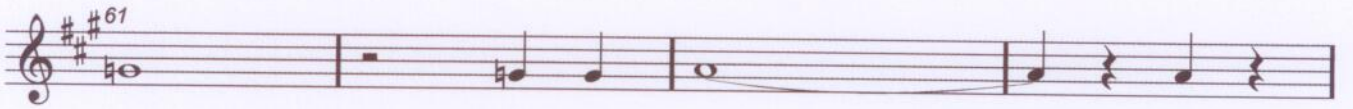
P 1

A handwritten musical score for a piece titled "Bauba des d'œuf". The score is written on 13 staves, each beginning with a treble clef and a key signature of three sharps (F#, C#, G#). The time signature is 4/4. The first staff (measure 1) contains a few notes: a quarter note G5, an eighth note A5, a quarter note B5, and a quarter rest. The second staff (measure 5) contains a quarter note G5, an eighth note A5, a quarter note B5, and a quarter rest. The third staff (measure 9) is empty. The fourth staff (measure 13) is empty. The fifth staff (measure 17) is empty. The sixth staff (measure 21) is empty. The seventh staff (measure 25) is empty. The eighth staff (measure 29) is empty. The ninth staff (measure 33) contains a blue scribble, a quarter note G5, a quarter note A5, and a quarter note B5. The tenth staff (measure 37) contains a quarter note G5, a quarter note A5, a quarter note B5, and a quarter note C6. The eleventh staff (measure 41) contains a quarter note G5, a quarter note A5, a quarter note B5, and a quarter note C6. The twelfth staff (measure 45) contains a quarter note G5, a quarter note A5, a quarter note B5, and a quarter note C6. The thirteenth staff (measure 49) contains a quarter note G5, a quarter note A5, a quarter note B5, and a quarter note C6.

Bauhaus SAX

den Abend

P2





Baritone SAX

Cher d'oeil

P3

