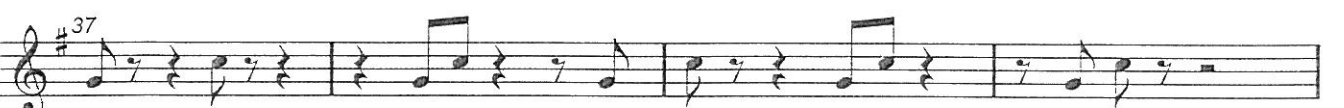
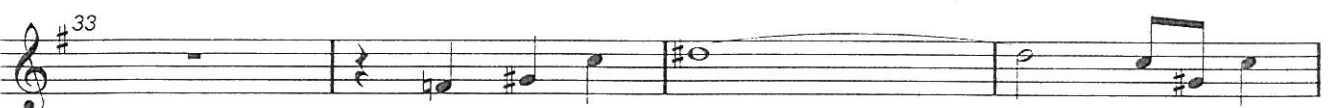
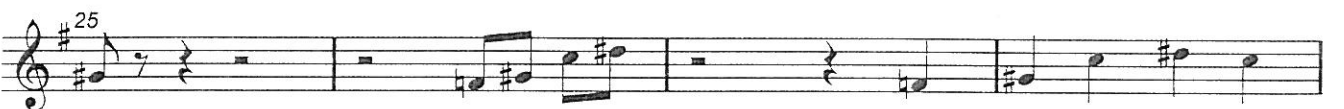
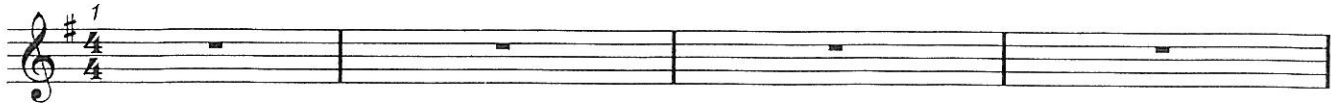


Balkan san

flamme rouge

P2



Musical staff 1, measure 53. Treble clef, key signature of one sharp (F#). The staff contains a single eighth note followed by a quarter rest.

Musical staff 2, measure 57. Treble clef, key signature of one sharp (F#). The staff contains a whole rest.

Musical staff 3, measure 61. Treble clef, key signature of one sharp (F#). The staff contains a whole rest.

Musical staff 4, measure 65. Treble clef, key signature of one sharp (F#). The staff contains a sequence of eighth notes: G4, A4, B4, C5, B4, A4, G4, F#4, E4, D4, C4.

Musical staff 5, measure 69. Treble clef, key signature of one sharp (F#). The staff contains a sequence of eighth notes: G4, A4, B4, C5, B4, A4, G4, F#4, E4, D4, C4, followed by a quarter rest.

Musical staff 6, measure 73. Treble clef, key signature of one sharp (F#). The staff contains a sequence of eighth notes: G4, A4, B4, C5, B4, A4, G4, F#4, E4, D4, C4, followed by a whole rest.

Musical staff 7, measure 77. Treble clef, key signature of one sharp (F#). The staff contains a sequence of eighth notes: G4, A4, B4, C5, B4, A4, G4, F#4, E4, D4, C4, followed by a quarter rest.

Musical staff 8, measure 81. Treble clef, key signature of one sharp (F#). The staff contains a sequence of eighth notes: G4, A4, B4, C5, B4, A4, G4, F#4, E4, D4, C4, followed by a quarter rest.

Musical staff 9, measure 85. Treble clef, key signature of one sharp (F#). The staff contains a whole rest.

Musical staff 10, measure 89. Treble clef, key signature of one sharp (F#). The staff contains a sequence of eighth notes: G4, A4, B4, C5, B4, A4, G4, F#4, E4, D4, C4, followed by a quarter rest.

Musical staff 11, measure 93. Treble clef, key signature of one sharp (F#). The staff contains a sequence of eighth notes: G4, A4, B4, C5, B4, A4, G4, F#4, E4, D4, C4, followed by a quarter rest.

Musical staff 12, measure 97. Treble clef, key signature of one sharp (F#). The staff contains a sequence of eighth notes: G4, A4, B4, C5, B4, A4, G4, F#4, E4, D4, C4, followed by a quarter rest.

Musical staff 13, measure 101. Treble clef, key signature of one sharp (F#). The staff contains a sequence of eighth notes: G4, A4, B4, C5, B4, A4, G4, F#4, E4, D4, C4, followed by a quarter rest.

Sacra son

flammenorgel

P<sup>3</sup>

