





Tuba

First musical staff in bass clef with two flats. It contains a sequence of eighth and quarter notes, including a triplet of eighth notes, followed by rests and a final eighth note.

Second musical staff in bass clef with two flats, continuing the rhythmic pattern of eighth and quarter notes.

A 2

Third musical staff in bass clef with two flats, continuing the rhythmic pattern.

Fourth musical staff in bass clef with two flats, continuing the rhythmic pattern.

~~B 3~~

Fifth musical staff in bass clef with two flats, continuing the rhythmic pattern. A diagonal line is drawn through the end of the staff.

Sixth musical staff in bass clef with two flats, continuing the rhythmic pattern.

C 2

Seventh musical staff in bass clef with two flats, continuing the rhythmic pattern.

Eighth musical staff in bass clef with two flats, continuing the rhythmic pattern.

D 2

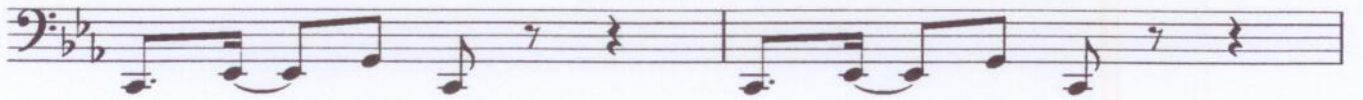
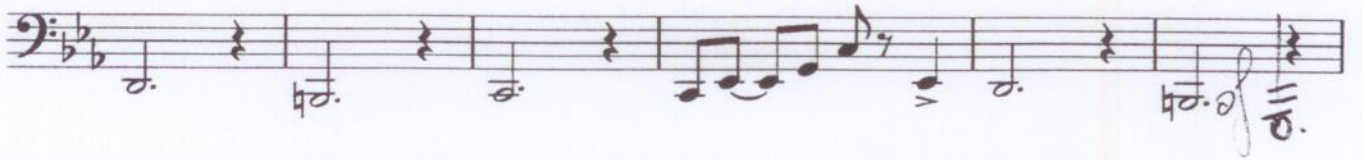
Ninth musical staff in bass clef with two flats, continuing the rhythmic pattern.

Tenth musical staff in bass clef with two flats, featuring a sequence of whole notes.

B 4

Eleventh musical staff in bass clef with two flats, featuring a sequence of whole notes.

Tuba



6