

flute p1

LAURA

Handwritten musical score for flute part 1 of 'Laura'. The score is written on ten staves of music. The first staff begins with a treble clef, a key signature of two sharps (F# and C#), and a 4/4 time signature. It starts with a series of slurs, followed by a measure with a fermata and a downward-pointing arrow above it. The music continues with various rhythmic patterns, including eighth and sixteenth notes, and rests. The score is marked with measure numbers 1, 5, 9, 13, 17, 21, 25, 29, 33, 37, 41, 45, and 49. At the end of the piece, there is a key signature change to two sharps (F# and C#) and a handwritten instruction '(7maba) puccini' written below the staff.

flute p2

LAURA



53



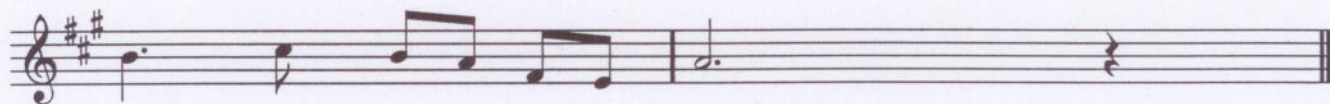
57



61



65



69